



WIRRAL
GRAMMAR
SIXTH FORM

**Student
FAQs**
2026-28

**Now welcoming female students from
September 2026 ↙**



Graded 'Outstanding' for Sixth Form Provision

Proud to be part of  **WIRRAL GRAMMAR SCHOOL FOR BOYS**
Discover, Thrive, Belong

Contents



- [Do I need to have passed the 11+ exam to apply for WGS6?](#)
- [Will I be the only student joining from another school?](#)
- [How will the sixth form team help me settle in?](#)
- [What if I feel nervous or unsure at first?](#)
- [Will it be difficult to make friends?](#)
- [Will I be shown around the school?](#)
- [What if I don't understand the timetable or routines?](#)
- [Are WGS6 rules different to main school rules?](#)
- [What if the sixth form feels very different from my previous school?](#)
- [What if I realise my course isn't right for me?](#)
- [How do I travel to WGS6?](#)
- [What should I wear and bring with me on induction day and during my first week?](#)
- [What catering facilities are there for WGS6 students?](#)
- [Can I use an iPad or laptop?](#)
- [What are the WGS6 areas like?](#)
- [What is the policy on mobile phone use for WGS6 students?](#)
- [Can I wear my ear-pods / headphones around site?](#)
- [What will my timetable be?](#)
- [What will A level class sizes be like?](#)
- [Are A levels very different from GCSEs?](#)
- [How much independent study will I need to do?](#)
- [What if I find the work challenging?](#)
- [Who do I go to if I need support or advice?](#)
- [Are there opportunities to meet other students outside of lessons?](#)
- [What leadership opportunities are available to WGS6 students?](#)
- [What is the MINDS peer-led mental health group?](#)
- [What is the Peer Support Group?](#)
- [What is the Personal Development Programme? \(PDP\).](#)
- [What are Speaker Sessions?](#)
- [What happens on Wednesday afternoon enrichment?](#)
- [What extra-curricular opportunities exist for me to get involved with?](#)
- [What support is available for wellbeing?](#)
- [Will WGS6 prepare me for university or work?](#)
- [Can I arrange driving lessons during the school day?](#)
- [What advice would you give to new students?](#)
- [I have completed an application form for WGS6; what happens next?](#)
- [What happens on results day in August?](#)

FAQs



Do I need to have passed the 11+ exam to apply for WGS6?

No. The admissions criteria for joining WGS6 is based on GCSE outcomes. Students typically enter the Sixth Form with a minimum of 6 GCSE grades at 9-5, or the equivalent, including English and Mathematics. Our prime concern is for students to embark on courses that are appropriate for their ability. A grade 6 or 7 is considered a solid starting point to continue a subject to A level.

Will I be the only student joining from another school?

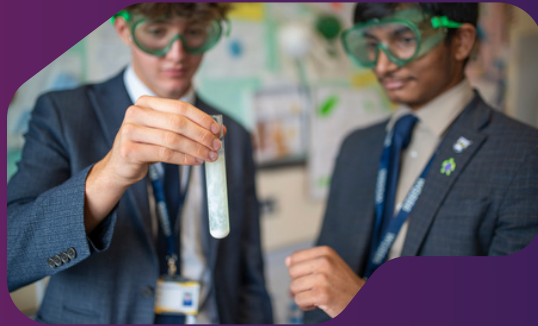
No. Each year we welcome students from a range of schools, so you won't be on your own. You will be allocated to a form and a house with other new starters.

How will the sixth form team help me settle in?

You will be allocated a 'buddy' from your form, ideally someone who has similar subject interests, and they will look after you in the first few days while you find your way around. Your Form Tutor and Head of Year will help you to access ICT and catering facilities and, together with your buddy, will help you understand WGS6 expectations and how the school works, both academically and socially.

The first day of term in September will be dedicated to Y12 induction activities and there will be no academic lessons on that day. This will be an opportunity to find your way around the building and get to know a few faces before lessons commence on day two.

FAQs



What if I feel nervous or unsure at first?

That's completely normal. We understand that joining a new sixth form can feel daunting and there are a lot of people here to support you. We have an extensive pastoral team which includes a learning mentor who is available to support you if you need any advice. Please ask if you have any concerns whatsoever; no question is too small.

Will it be difficult to make friends?

Most students find friendships develop quickly through lessons, study periods, enrichment activities, extra-curricular activities and leadership opportunities; WGS6 is a fresh start for everyone.

Will I be shown around the school?

You are welcome to visit us for a tour during the application process and you are welcome to attend our November A level options event and Summer term 'Meet the Team' event. Once you have started with us, your buddy will help you familiarise yourself with the site, facilities, and WGS6 areas so you feel confident navigating the school.

What if I don't understand the timetable or routines?

You're not expected to know everything straight away. Staff will explain routines clearly, and you can ask questions at any time; the important thing is to ask!

FAQs



Are WGS6 rules different to main school rules?

WGS6 students are young adults, and therefore have greater independence. Students are allowed off site at break and over lunch time and are allowed to go home at 2:40pm if they do not have a P5 lesson, however there are still clear expectations around behaviour, attendance, and commitment to learning.

All WGS6 students are invited to read the WGS6 handbook which explains sixth form routines and expectations and will be asked to sign their agreement to a 'Code of Conduct' as detailed in the handbook.

What if the sixth form feels different from my previous school?

That's normal. Every sixth form has its own culture, and it can take time to adjust; most students feel settled within the first few weeks but if you need any help at any stage in your sixth form journey, please ask.

What if I realise my course isn't right for me?

There is a settling in period at the start of Y12 when course changes can be discussed. It is important to speak to staff as early as possible so that you can quickly establish yourself in the correct courses for you.

How do I travel to WGS6?

Students travel to us from a wide geographical area and WGS6 is served well by the local bus and train services. For more information see our website:

 [Transport Links](#)

 [Coach Routes](#)

FAQs



What should I wear and bring with me on induction day and during my first week?

Please dress in accordance with our WGS6 business attire policy, as detailed on our website and in our WGS6 handbook - see details under 'Dress to Impress' on our [Admissions](#) page.

You will need basic stationery for the start of your lessons on day two and we also recommend you have a packed lunch or money to buy food for the first few days until your cashless catering account is set up.

What catering facilities are there for WGS6 students?

WGS6 students can purchase food from Norm's Deli, situated next to the canteen; food can also be pre-ordered to save time at break and lunch. Prices are competitive, food is of a very good standard and our catering team enjoy receiving student feedback to ensure menus reflect student preferences. If you prefer, you may purchase food from local shops, which are only a short walk away.

Can I use an iPad or laptop?

You need to check with individual subject teachers whether this will be allowed in lessons. You can bring in your own devices to use in independent study periods but this is at your own risk and you must take full responsibility for them.

FAQs



What are the WGS6 areas like?

There are two dedicated WGS6 areas which are used as both study and social spaces; students are also allowed to study in the dining room area during lesson times and in classrooms that are not being used for lessons.

There are no lockers available to WGS6 students but bags and coats may be left in the Sixth Form Areas for short periods of time. There are also vending machines available in both areas.

What is the policy on mobile phone use for WGS6 students?

Please switch off your phone upon entering the site and keep it in bag / pocket around site and in lessons; unless your teacher specifically directs you to use it for a task. You may need your phone during form time for a specific activity, but otherwise, it should be switched off and put away.

You can use your phone in the two WGS6 areas at any time; you can also use it in the alternative WGS6 study spaces, namely the canteen, annex and IT rooms during lesson times, but only for the purposes of study.

You can read our full mobile phone policy on our website.

Can I wear my ear-pods / headphones?

Yes, in study and social areas. Please do not wear these items when moving around site; if you do, you will be asked to remove them.

FAQs



What will my timetable be like?

You will have a 2 two-week timetable with 10 periods per subject over week A and B; most A level subjects are taught by two teachers. Wednesday afternoons are dedicated to two hours of enrichment activities and you will also have a PDP session per week and a regular speaker session.

Form times are 9:00am until 9:20 each morning and the day runs from 8:55am until 3:40pm. If you are studying Further Maths, expect to have significantly less independent study periods than other students. If you do not have a lesson period 5, you may sign out and go home at 2:40pm.

What will A level class sizes be like?

This very much depends on your subject and the cohort for that year. Classes can range from 6 to just over 20 students and some subjects will have more than one class.

Are A levels very different from GCSEs?

Yes. Sixth Form study is more independent and in-depth. Lessons move at a faster pace, and you'll be expected to take greater responsibility for your learning.

How much independent study will I need to do?

You will have plenty of timetable periods dedicated to independent study. Teachers will guide you on how much work to complete and how to study effectively at Sixth Form level. Your PDP sessions will highlight revision and study techniques and complementary resources are available via student Teams.

FAQs



What if I find the work challenging?

Support is available. All subject teachers and the wider pastoral team are here to offer advice and support if you are struggling or need extra guidance.

Who do I go to if I need support or advice?

Your form tutor, head of year, learning mentor and all your subject teachers are here to support you with academic, personal, or wellbeing concerns.

Are there opportunities to meet other students outside of lessons?

Yes. Students can take part in a wide range of extra-curricular activities, clubs, trips, volunteering, and leadership roles. These opportunities help students mix, build confidence, and feel part of our community.

What leadership opportunities are available to WGS6 students?

Sixth Form students are encouraged to take on student leadership roles. These roles allow students to develop confidence, responsibility, and teamwork while making a positive contribution to the school community. Many new starters join our Y12 prefect team and go on to become senior prefects in Y13.

What is the MINDS peer-led mental health group?

MINDS is a student-led mental health and wellbeing group. Students involved in MINDS help promote positive mental health, raise awareness, and support wellbeing initiatives across the school; we actively encourage and support positive mental health initiatives.

FAQs



What is the Peer Support Group?

The Peer Support Group gives Sixth Form students the opportunity to support younger students in the lower school. Peer supporters act as positive role models, offering guidance, encouragement, and support to help younger students settle and thrive. WGS6 students also engage in mentoring KS4 students in specific subject areas.

What is the Personal Development Programme? (PDP)

Our Personal Development Programme supports students beyond their academic studies. It covers wellbeing, careers, life skills, employability, and preparation for adult life, helping students grow in confidence and independence. PDP Sessions will be delivered by form tutors who will be your first point of contact for everyday support.

What are Speaker Sessions?

Students attend regular speaker sessions delivered by external speakers and professionals, often our speakers are alumni who are keen to share their post-WGS6 story. These sessions broaden students' experiences, raise aspirations, and provide insight into future pathways such as university, apprenticeships, and employment.

FAQs



What happens on Wednesday afternoon enrichment?

Wednesday afternoons are dedicated to our award-winning enrichment programme. Students take part in activities such as sport, creative projects, volunteering, leadership roles, and personal development sessions. This is an important part of WGS6 life and helps students develop skills beyond the classroom and give something back to our community.

What extra-curricular opportunities exist for me to get involved with?

There is a broad range of extra-curricular activities available for you, from sports teams in rugby, hockey, basketball or cricket, to multiple musical ensembles, school dramatic productions and student-led groups such as MINDS, PSG (Peer Support Group) for younger students and GCSE mentoring for KS4 students. If an opportunity does not exist that appeals to you, speak to one of the team about starting a new group or activity.

What support is available for wellbeing?

Student wellbeing is a priority. You are encouraged to share any wellbeing concerns with a trusted adult in the sixth form; this may be your form tutor, head of year, subject teacher or learning mentor. You may also benefit from engaging with student-led groups such as MINDS, our mental health support group.

We also have school counsellors and links to external agencies should you require an extra level of support

FAQs



Will WGS6 prepare me for university or work?

Yes. Through academic study, leadership opportunities, enrichment, speaker sessions, and our Personal Development Programme, students are well prepared for university, apprenticeships, or employment. Our Careers and Progression support is award winning and will support you every step of the way.

Can I arrange driving lessons during the school day?

Yes, as long as parent / carer sends in notification at least 24 hours in advance and your lesson does not clash with any timetabled sessions. Please see full details of our policy within the WGS6 Handbook on our website.

What advice would you give to new students?

Give yourself time, get involved in enrichment and leadership opportunities, ask questions, and remember that it's okay not to feel settled straight away.

I have completed an application form for WGS6; what happens next?

Once we have your application form, we will make you a conditional offer based on our admissions criteria. If you have not already been on a tour of the school, you are welcome to arrange one with our admissions team.

We will also keep in touch with you to share details of our 'Meet the Team' event in the summer term; this will be a chance for you to visit us to ask any further questions and to be advised regarding what will happen on results day in August.

FAQs

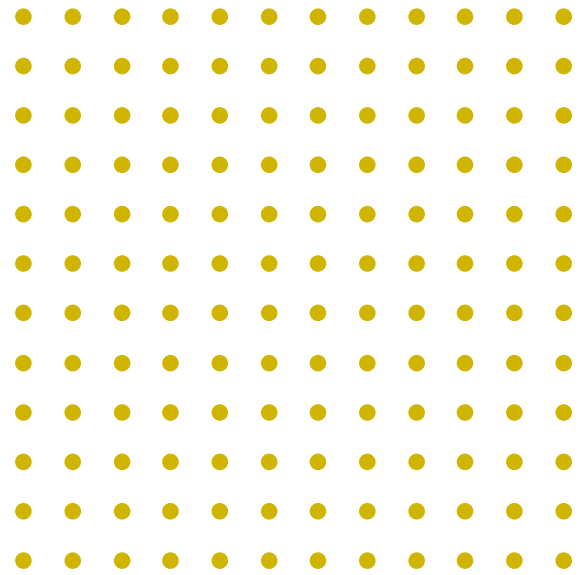


What happens on results day in August?

After you have collected your results from your school, please call in to WGS6 between 11am and 1pm to share your results with us. If your results meet our admissions criteria we will discuss the next stage of your enrolment, namely your preferred A level choices.

Please bring a paper copy of your GCSE results with you. If you have any concerns over whether you have fully met our admissions criteria, we would encourage you to pop in and see us to discuss your situation in more detail.

If you have any further questions that are not addressed in this FAQ document, or you need clarification, please ask via WGS6Admissions@wirralgrammarboys.com



Thank you for your interest in WGS6

If you are applying from another school and would like to visit us for a tour, please contact the WGS6 Team via:
WGS6Admissions@wirralgrammarboys.com

For those (external applicants) interested in joining us in September 2026 please apply via the QR code below:-

